

Kootenai (koot-ney)

Square Footage:

Main Level: 2423 square feet

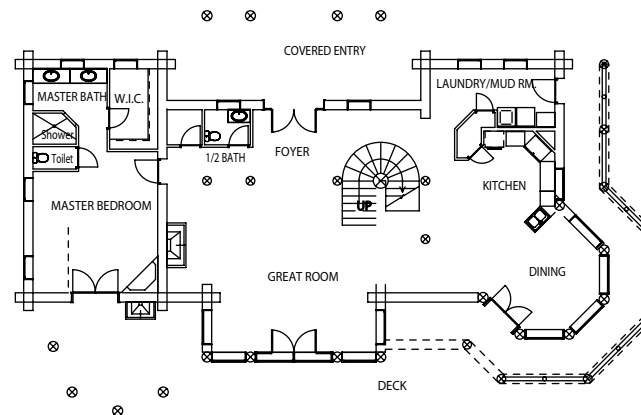
Upper Level: 1541 square feet

Total: 3964 square feet

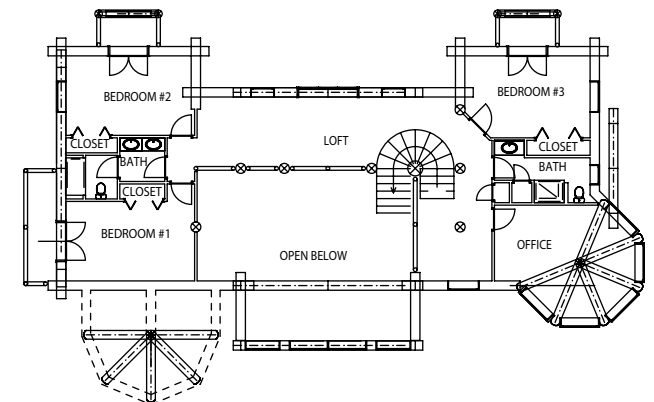
This log home design captures the outdoors and takes it inside. Walk inside and the ceiling soars above your head. Whether you've got a big family or just like to entertain a lot, this house has the room you need. We literally could not build-in any more windows on the front of this beautiful two-story home. Are you thinking about a hot tub out by the fireplace? Go ahead sneak out from your Master Suite and enjoy it. The outdoor covered fireplace is truly a "room without walls" that adds real living space on those cool summer nights. The unique log staircase sets this Caribou design apart from the rest.



Main Floor Plan
LIVING AREA: 2423 sqft



Second Floor Plan
LIVING AREA: 1541 sqft



Options:

Add some "character logs" for that one of a kind look in the Great Room. Optional straight staircase gives the room a totally different look.

